

FOR IMMEDIATE RELEASE
June 24, 2019

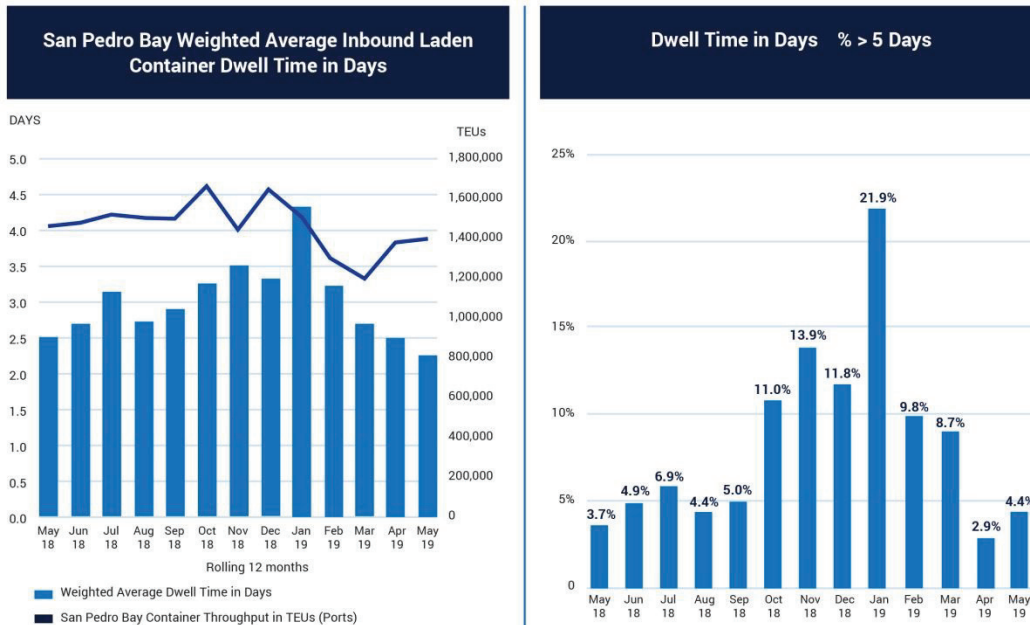
Contact: Jessica Alvarenga
jalvarenga@pmsasip.com
562-432-4042

Container Dwell Time is on a Downward Trend

After the pre-tariff surge in container volumes, local warehouses were filled and the data showed a dramatic increase in containers remaining on terminals. The average number of days containers stayed at San Pedro Bay ports earlier this year was the highest since the Pacific Merchant Shipping Association (PMSA) began tracking this data in 2016. May's container dwell time has continued a recent downward trend as warehouses recover from the surge's effects. In May, containers at San Pedro Bay ports stayed an average of 2.3 days at terminals between the time they were unloaded from a vessel and picked up by a trucker. That is a shorter container dwell time than the average 2.51 days in April and the 2.68 days in March. "This good news reflects more efficient operations for all members of the supply chain," stated Jessica Alvarenga, Manager of Government Affairs for PMSA

The data shows 4.4% of containers stayed at terminals for five days or longer during the month of May; although that was higher than the 2.9% in April, it was much lower than the 8.7% in March.

Shorter container dwell times allow for fluid and efficient operations.



###

About the Pacific Merchant Shipping Association (PMSA)

The Pacific Merchant Shipping Association (PMSA) is an independent, not-for-profit association focused on global trade. PMSA operates offices in Oakland, Long Beach and Seattle, and represents owners and operators of marine terminals and U.S. and foreign vessels operating throughout the world.